



**SEAL the deal  
with MAXX**



## Our Multi-Step Process

- We carefully isolate the work area and protect the surrounding area, as needed.
- We apply our custom soaps to remove any previous stains and/or sealants from the designated area. We will use an orbital water jet scrubber if necessary.
- We thoroughly rinse the cleaned surface with 160° hot water and a rinse agent to enhance the natural color.
- We apply a liberal coat of the appropriate SealMaxx sealant to the designated area while wet.
- We will sand all the horizontal wood when dry and apply the PWS1000 Moisture Barrier if requested. The PWS1000 is applied as a second sealant to all concrete products.
- The clean, sanded, and sealed surface will be ready to use in 24 hours. The SealMaxx Team will remove any protective coverings and work supplies from the area upon completion.

636.294.MAXX

Our mission is to  
Protect the Integrity  
of Your Investment

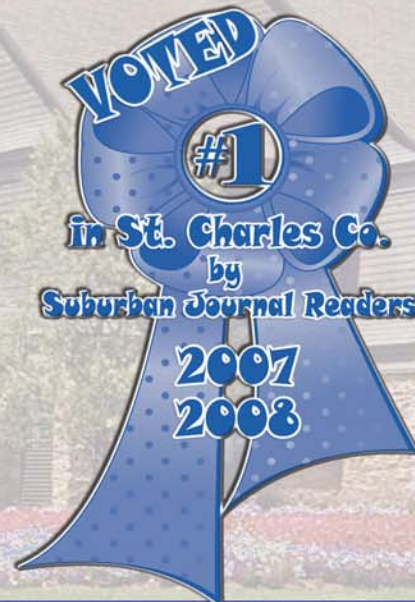
For more information or  
to request a quote  
please contact us by phone,  
email or our website:

636.294.MAXX (6299)

info@sealmaxxstl.com

www.MAXX.ws

(Website has more detailed information)



www.MAXX.ws

**SEALMAXX**  
OF GREATER ST. LOUIS, INC.

**PERMANENT SEALANT FOR  
CONCRETE, WOOD AND MASONRY**



**"Often Imitated  
Never Duplicated"**

*"Our goal is to provide the highest customer service, with  
the best products available at a fair and reasonable price."  
David Monahan, Owner*



636.294.MAXX

## PROTECTS

*Protect and beautify wood decks, wood siding, wood fences and more with SealMaxx Wood Sealant*



### The SealMaxx Wood Application:

- Prevents rotting and warping and is backed with a 25 year product/labor warranty.
- Restores wood to its original and natural color.
- Inhibits mold, mildew and fungus growth.
- Increases wood strength and density.
- A one time flood coat application.

*Application of the SealMaxx Wood Sealant does not make water bead up, however, with the PWS1000 Moisture Barrier application the water will bead up.*

[www.MAXX.ws](http://www.MAXX.ws)

## STRENGTHENS

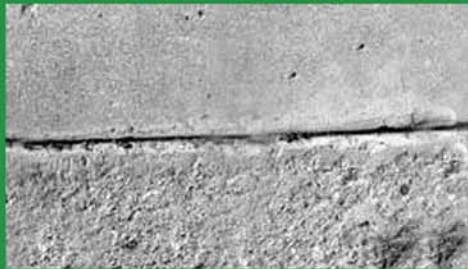
*Protect and Strengthen all concrete surfaces with SealMaxx Concrete Sealant and PWS 1000 Moisture Barrier*

### The SealMaxx Concrete and Moisture Barrier Applications:

- Prevent dusting, pitting and scaling.
- Prevent alkali damage...road salt.
- Guard against penetrating stains, including oil.
- Create a moisture vapor barrier, allowing water to bead up.

*SealMaxx Concrete Sealant is applied wet, following the deep cleaning process. The PWS1000 Moisture Barrier is applied 24/48 hours after the initial SealMaxx cleaning and sealing to a dry surface.*

### TREATED CONCRETE



### UNTREATED CONCRETE

636.294.MAXX

## BEAUTIFIES



*"NEVER seal your deck, driveway or patio AGAIN!"*



[www.MAXX.ws](http://www.MAXX.ws)